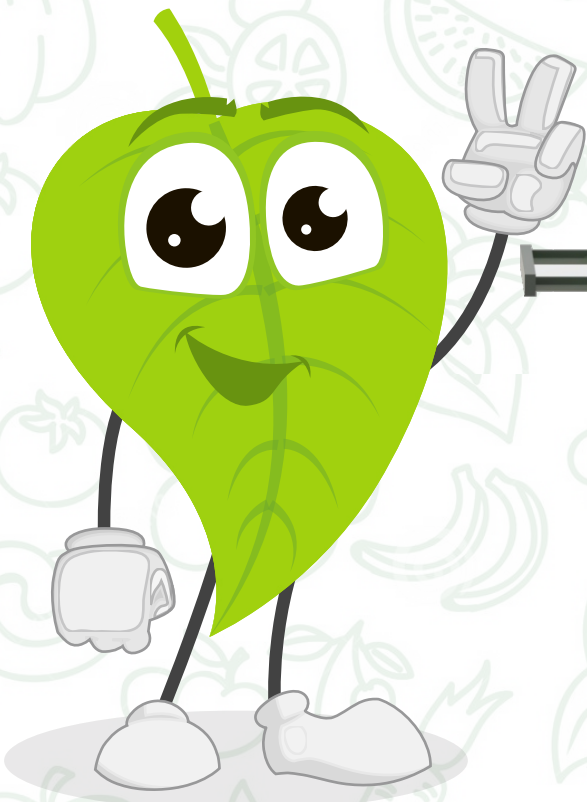
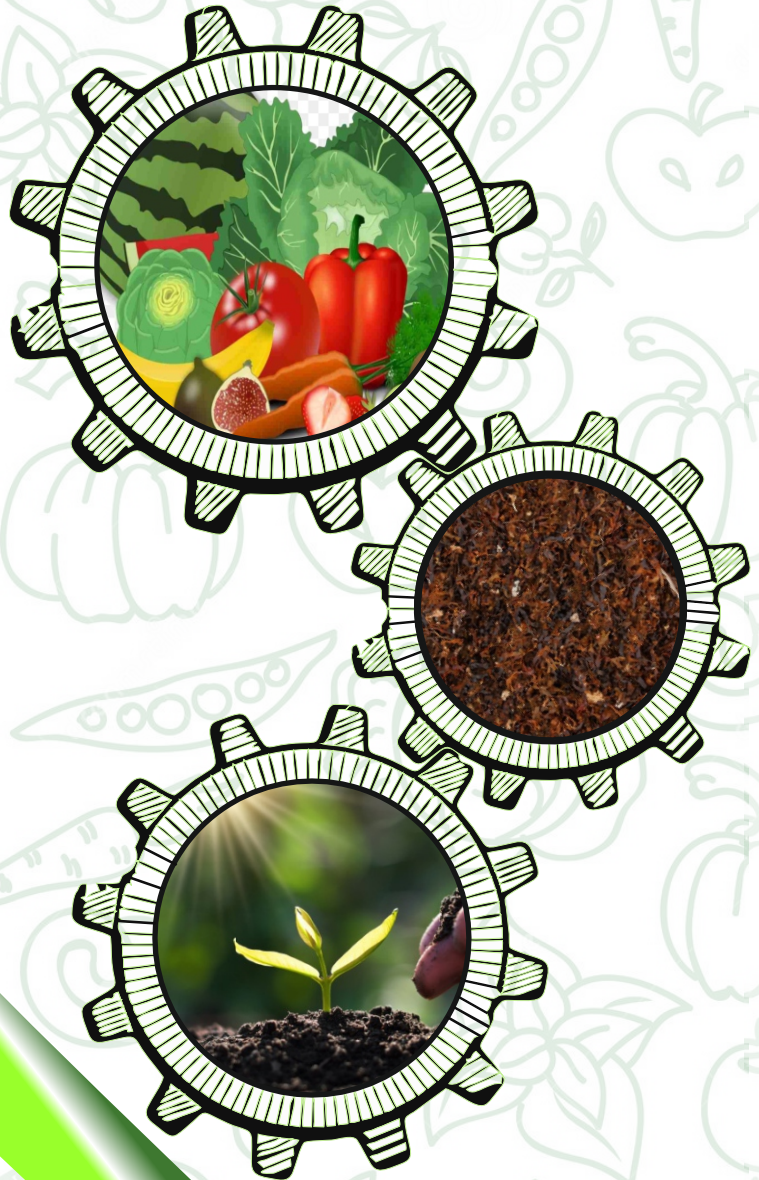


PT

"BE A PART OF EVOLUTION AND NOT POLLUTION"



Hey I am Leafy!!!!



It is me who regulate carbon dioxide, oxygen and water vapor and exchange with atmosphere. I am the chef of my own tummy and create my food through Photosynthesis!!!!

Where every living beings intakes Oxygen and Exhales away CO₂, "The Only" Engine who intakes CO₂ and generates Oxygen is me. So I play a very important role for every living thing. For me to grow more you need to plant more trees. The only source for my growth is water, soil and good quality compost. There is a method of generating Compost and it is extremely easy and feasible, HOW??? So let me introduce you to my friend PT Mechatronics who manufacture Organic Composting machine (OCM). OCM is based on Bio-Mechanical processing equipment's.

Company Profile

PT Mechatronics is a leading company in organic waste management with advanced technology and method of composting. A team of dedicated experts that provide complete assistance in environment efficient services since, 2008. The growing urban and industrials hub may continue to give tonnes of waste into cities. Managing waste is not only crucial for environment, but also for business/Society to carry out operations/healthy lifestyle without disrupting Nature.

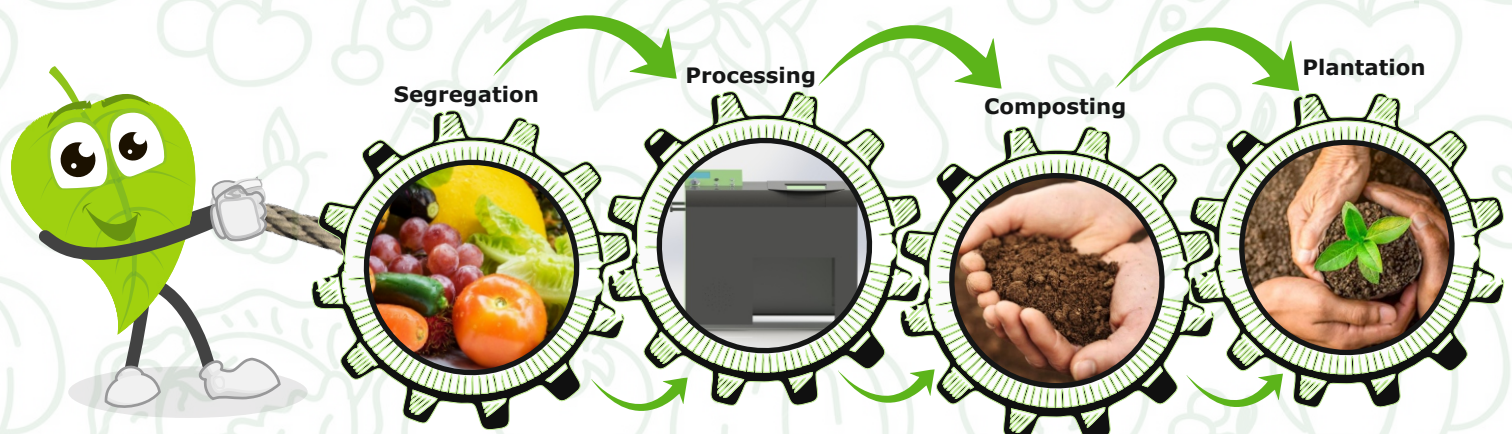
PT Mechatronics offers multiple solutions to make organic waste treatment realistic and simple for any bulk waste generator. Be it your housing society, restaurant or a corporate canteen, we have a solution for you! OCM rapidly processes your everyday wet waste – vegetables cuts, fruit peels, food discards and garden waste - into good quality compost which can be further used in horticulture, gardening and landscaping. The entire process is aerobic, natural and biological.

Problem due to Wet Waste

Presently in India 2.63 million tonnes of Solid waste is being generated on daily Basis, from which 0.95 Million Tonnes are Organic Waste. An Average Household generates approximately 1.2Kg of wet waste daily. Under current scenario, this waste is directly dumped into huge landfills. Landfill gas typically contains 45% to 60% Methane, 40% to 60% Carbon Dioxide, it also includes small amounts of nitrogen, oxygen, ammonia, sulfides, hydrogen, carbon monoxide, and nonmethane organic compounds (NMOCs) such as trichloroethylene, benzene, and vinyl chloride. These threats to the environment



Process For Composting



FOR COMPOSTING PROCESS, PT OFFERS TWO TYPE OF COMPOST UNITS

10 Days Compost Machine - Semi Automatic

- OCM is most ideal for smaller setups to convert food waste into compost.
- OCM is economical in cost and comes with a curing system.
- Compost matures in controlled humidity and environmental condition.
- Batch type operation makes it viable bringing down the initial investment.

Machine Capacity: 50KG to 10000 Kg per Day

Model No	Capacity Kg/Day(8hrs)	Machine Size In FTS (LxBxH)
OCM 25	25	13.1 x 12.2 x 10
OCM 50	50	16.9 x 12.5 x 10
OCM 75	75	16.9 x 12.5 x 10
OCM 100	100	16.9 x 12.5 x 10
OCM 125	125	20.6 x 15.2 x 10
OCM 150	150	20.6 x 15.2 x 10
OCM 180	180	24 x 15.2 x 10
OCM 200	200	25.3 x 15.2 x 10
OCM 250 - 300	250 - 300	32.6 x 15.2 x 10
OCM 400 - 450	400 - 450	23 x 19.4 x 10
OCM 500	500	30 x 21 x 10
OCM 500 - 10000	As Per Request	



Fully Automatic compost Machine

- This is most advanced composting machine that converts wet waste into compost in just 24 Hrs.
- No need for a separate curing system, this model is well equipped with moisture reduction system, odor control mechanism and fully automatic operation.
- Just load the machine and forget it.
- Ready mature compost is simply taken out the next day.

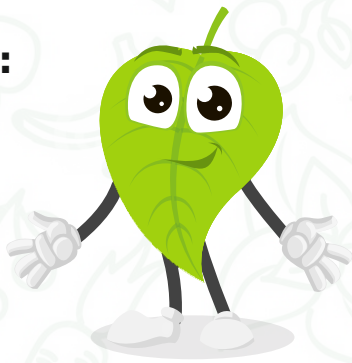
Machine Capacity: 100KG to 10000 Kg per Day

Model No	Capacity Kg/Day(8hr)	Machine Size In FTS (LxBxH)
OCMA 25	25	8.20 x 3.93 x 5.25
OCMA 50	50	8.20 x 3.93 x 6.24
OCMA 100	100	9.84 x 3.93 x 6.24
OCMA 200	200	11.84 x 5.58 x 6.89
OCMA 250 - 300	250 - 300	13.13 x 5.90 x 7.55
OCMA 400 - 450	400 - 450	14.76 x 5.90 x 7.55
OCMA 500	500	16.40 x 5.90 x 7.55
OCMA 500 - 10000	As Per Request	



Salient Features:

- Fully/Semi Automatic
- Takes all types of Wet Waste
- Low Noise
- Low Maintenance
- Low Floor Space / Compact
- Safe for Operations
- No Foul smell, no rodents/ insects/ Flies
- Continuous Process
- Economical Solutions

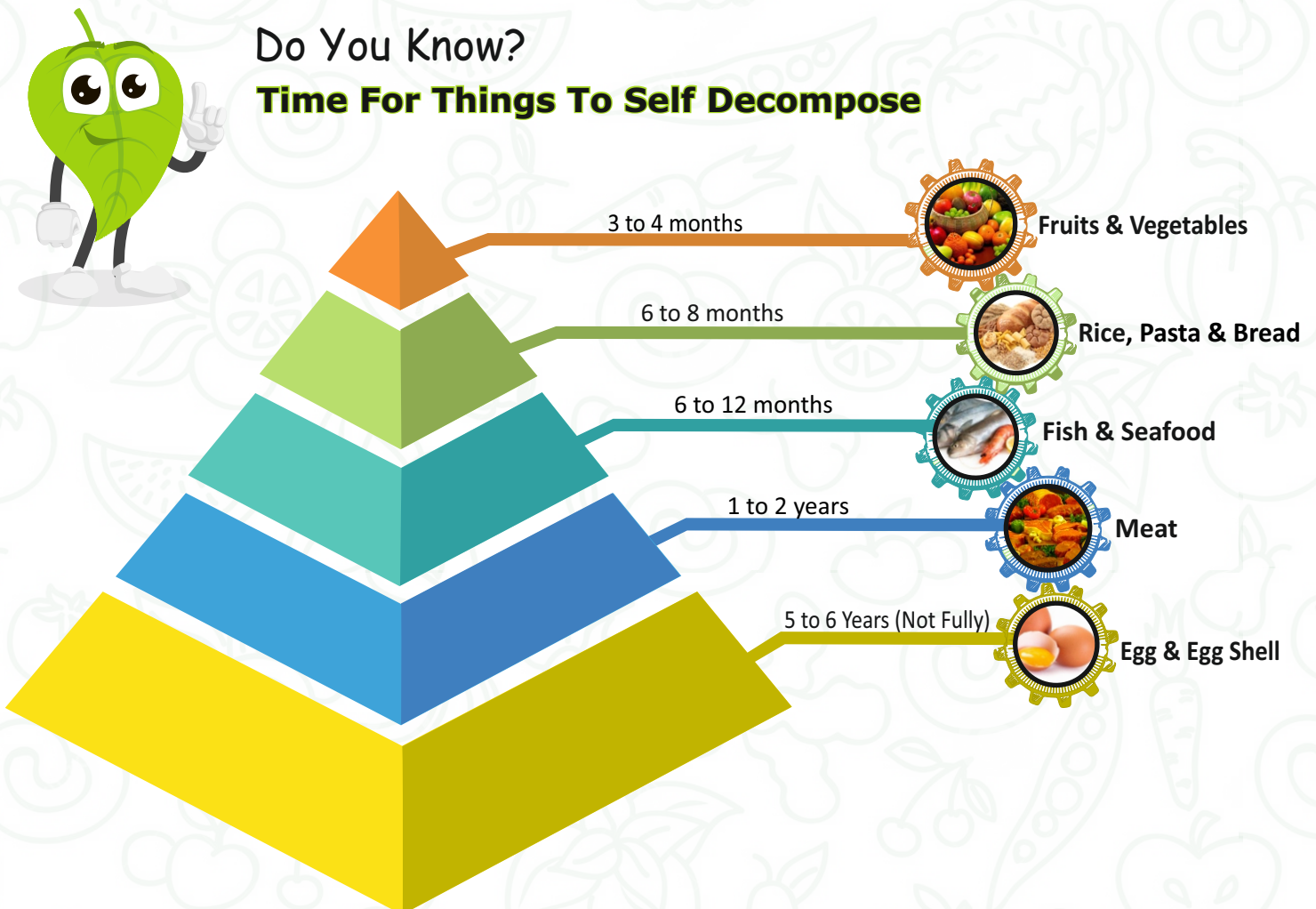


Places where OCM's can be installed:

- Villas/ Apartments/ Townships
- Hotels/ Restaurants/ Canteens
- Offices/ Industries/ Tech Park
- Shopping Malls/ Theaters
- School/ Colleges/ Hostels
- Temples
- Government Organizations
- Hospitals

If the disposal of waste is done through burial method then below are some products which takes long time to compost and release hazardous gases and can threat our environment. However, this takes a long time and requires constant monitoring. Hence for huge quantity of waste generated, organic waste converters (OWCs) are used.

Do You Know? Time For Things To Self Decompose



Reach Us At...



Regd. Office : PT Mechatronics, 104/5, Viva Kingston Tower, Opp Viva College, Bypass Road, Virar West
Manufacturing Unit : Building No. 1, 205/206, 2nd Floor, Riddhi Siddhi Industrial Complex,
Chandansar, Opp. HDIL Industrial Park, Virar (E), Palghar 401 305.

Marketed By : PTESPL

7756979879 | 7559351879 | 0250-2519494

www.ptecologicalservices.com

info@ptespl.com

